

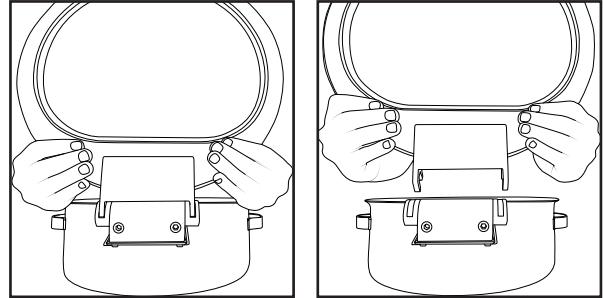


Thank you for choosing our Synergy Chafers. Please follow these steps for safe lid removal and tension adjustment.

To remove the lid:

1. Open the lid fully.
2. With both hands, grasp the lower edges of the lid near the hinge connection points.
3. Pull straight upward with steady pressure—the lid will disengage from the hinge assembly.

Note: The hydraulic mechanism is designed for easy removal without tools. Always ensure the lid is fully open before attempting removal.

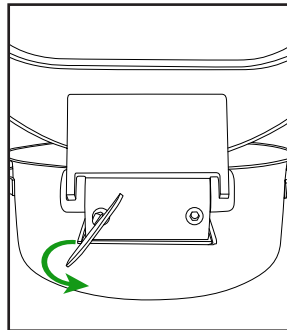


To adjust the lid's opening and closing tension:

1. Open the lid at the angle where you'd like it to stay open.
2. Locate the two adjustment knobs on the back of the hinge.
3. Insert the provided key into one of the knobs.
4. Turn the key counterclockwise to increase tension (tighten)
5. Turn the key clockwise to reduce tension (loosen).
6. Repeat on the opposite side to maintain balanced tension.

Tip: For best results, adjust both sides incrementally while testing lid movement at various angles.

To tighten:



To loosen:

