

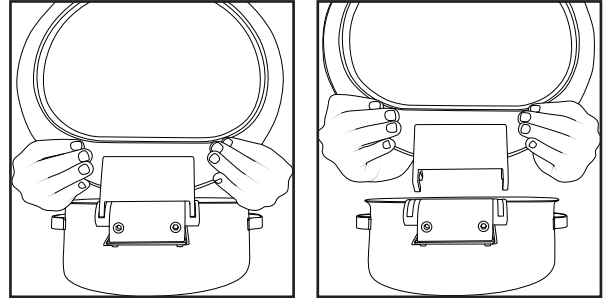


Thank you for choosing our Synergy Chafers. Please follow these steps for safe lid removal and tension adjustment.

To remove the lid:

1. Open the lid fully.
2. With both hands, grasp the lower edges of the lid near the hinge connection points.
3. Pull straight upward with steady pressure—the lid will disengage from the hinge assembly.

Note: The hydraulic mechanism is designed for easy removal without tools. Always ensure the lid is fully open before attempting removal.

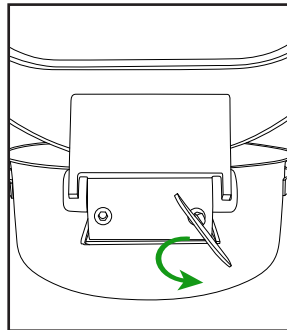


To adjust the lid's opening and closing tension:

1. Open the lid to the angle where you'd like it to stay.
2. Locate the adjustment knob on the back of the hinge marked with "+" and "-".
Note: The opposite knob marked with an "X" is fixed and should not be adjusted.
3. Insert the provided key into the adjustment knob.
4. Turn the key counterclockwise to increase tension (tighten).
5. Turn the key clockwise to reduce tension (loosen).

Tip: Adjust incrementally and test the lid movement at various angles for best results.

To tighten:



To loosen:

